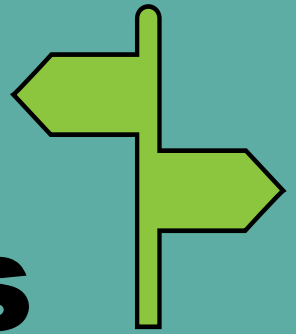




# Portishead Health Walks



**Walks are on Mondays at 10.30am**

**Meet at Waitrose Piazza**

8, 15, 22 and 29 January  
5, 12, 19 and 26 February  
4, 11, 18 and 25 March

Away Walks will also take place on:  
19 February – Badock's Wood  
25 March – Strawberry Line

Please arrive 5-10 minutes early to allow for registration and any formalities.  
We aim to set off punctually.

**Aimed at individuals who want to start and stay active**

**Assistance dogs only.**

**If you need support to walk, please bring someone with you**

**Please wear suitable clothing and footwear**

**No need to book, just come along!**

**Contact Chris: 01275 845 736**

[GetActive@n-somerset.gov.uk](mailto:GetActive@n-somerset.gov.uk)

[www.betterhealthns.co.uk/get-active/walking/](http://www.betterhealthns.co.uk/get-active/walking/)

