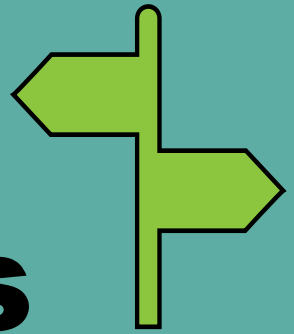




Portishead Health Walks



**Walks are on Mondays at 10.30am
Meet at Waitrose Piazza**

1, 8, 15, 22 and 29 April
6, 13, 20 and 27 May
3, 10, 17 and 24 June

There are 3 different walks available to suit individual needs and abilities.

Away Walks will also take place on:
29 April – Bluebell Walk, Prior's Wood, Portbury
13 May – Ashton Court
24 June – Clifton

Please arrive 5-10 minutes early to allow for registration and any formalities.
We aim to set off punctually.

Aimed at individuals who want to start and stay active

Assistance dogs only.

If you need support to walk, please bring someone with you

Please wear suitable clothing and footwear

No need to book, just come along!

Contact Chris: 01275 845 736

GetActive@n-somerset.gov.uk

www.betterhealthns.co.uk/get-active/walking/

